



**GHENT
UNIVERSITY**

STRUCTURED MOBILITY

Gijs Coucke – 22 Nov. 2017

GHENT (BELGIUM)

London
310 km

Amsterdam
220 km

Paris
290 km

Berlin
790 km

Brussels
55 km



GHENT (BELGIUM)

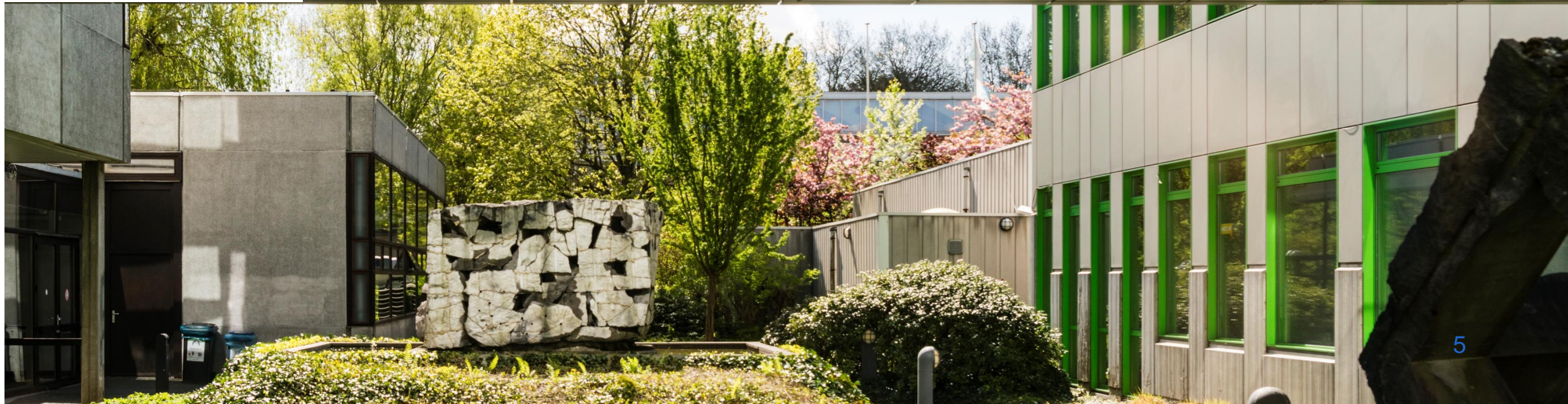
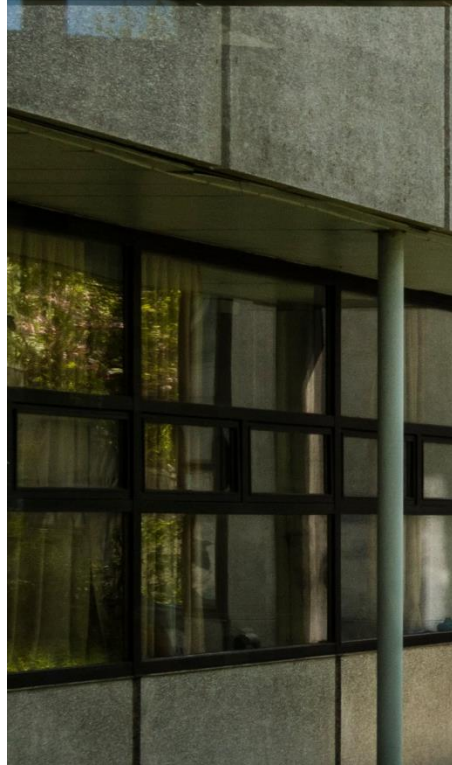
- A genuine student city with +70,000 students



CAMPUSES OUTSIDE OF GHENT: KORTRIJK



UNIVERSITEIT GENT
CAMPUS KORTRIJK



CAMPUSES OUTSIDE OF GHENT: OSTEND



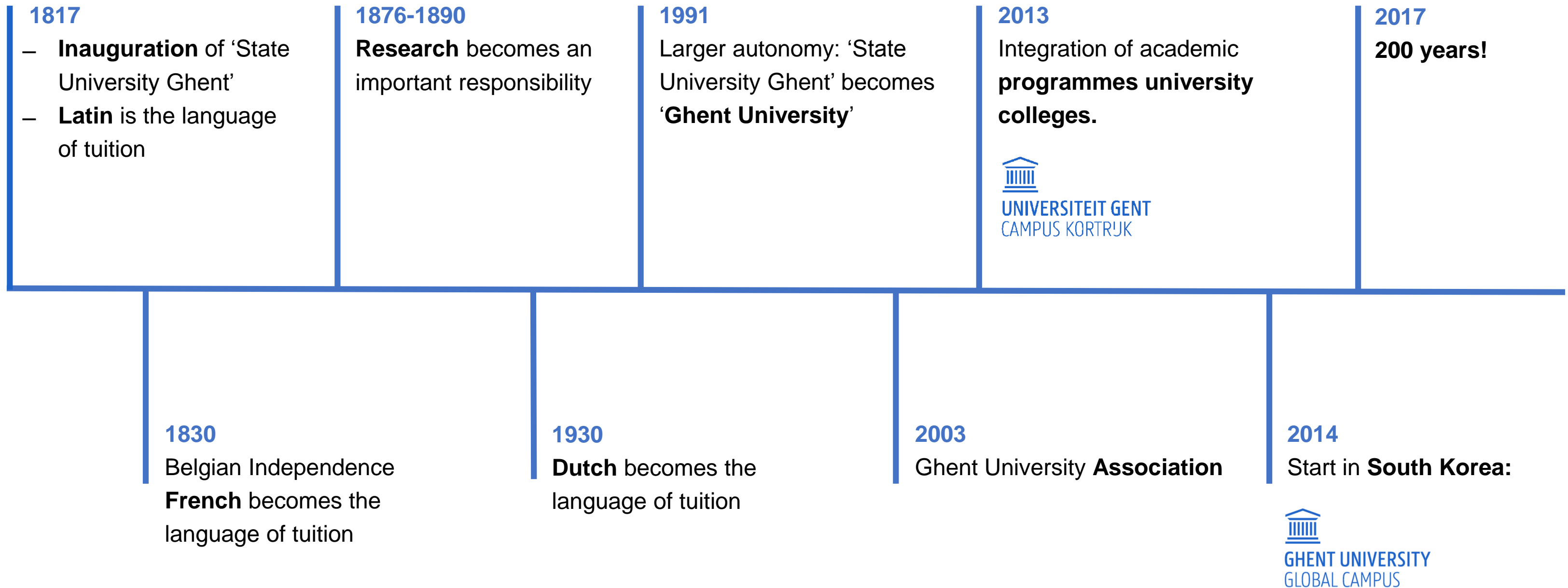
CAMPUSES OUTSIDE OF GHENT: SOUTH KOREA



GHENT UNIVERSITY
GLOBAL CAMPUS



TIMELINE



GHENT UNIVERSITY

20.0

A HISTORY FOR THE FUTURE



MISSION STATEMENT

Ghent University wants to be a **creative community** of staff, students and alumni, connected by the values the university carries out: **engagement, openness and pluralism.**

Our motto is **Dare to Think**: we encourage students and staff members to adopt a critical approach.

11 FACULTIES

- Managed by the dean and the faculty board
- Divided in departments



 FACULTY OF ARTS
AND PHILOSOPHY



 FACULTY
OF LAW



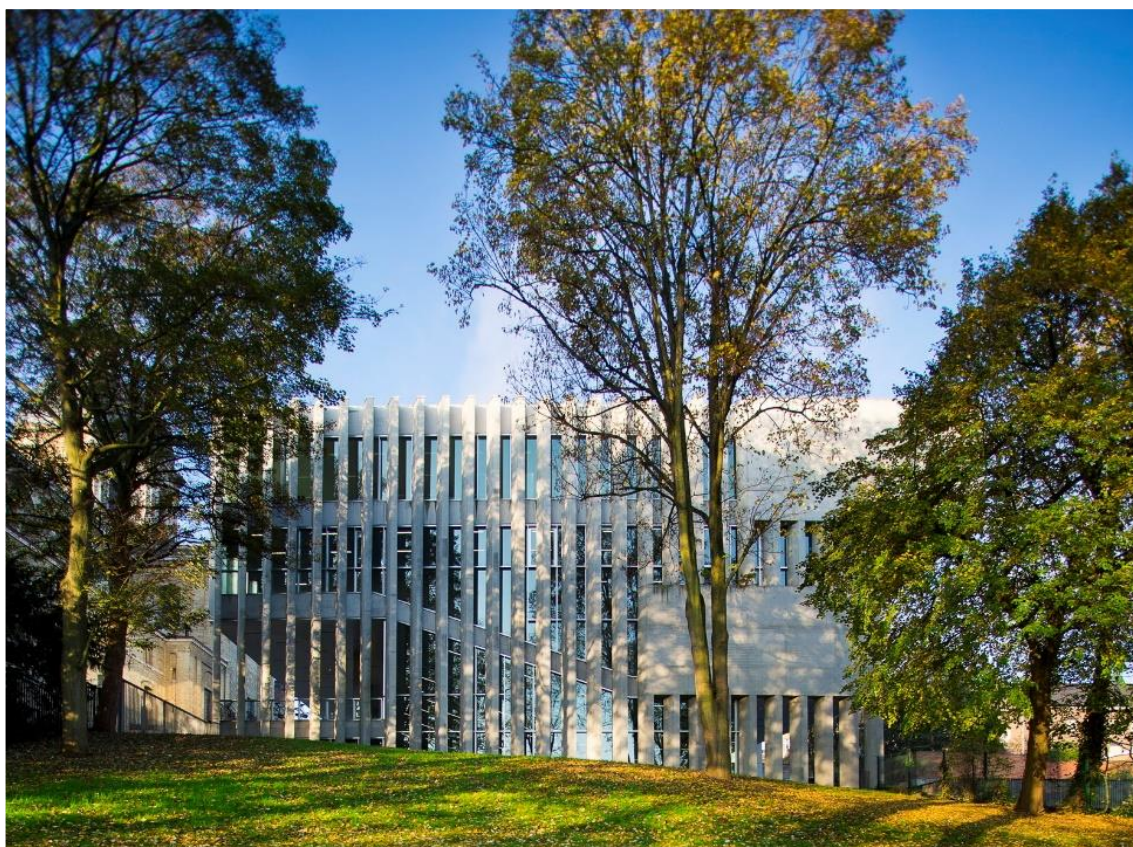
 FACULTY
OF SCIENCES



 FACULTY OF MEDICINE
AND HEALTH SCIENCES



 FACULTY OF ENGINEERING
AND ARCHITECTURE



 FACULTY OF ECONOMICS AND
BUSINESS ADMINISTRATION



 FACULTY OF
VETERINARY MEDICINE
accredited by EAEVE

 GHENT
UNIVERSITY



 FACULTY OF PSYCHOLOGY
AND EDUCATIONAL SCIENCES



 FACULTY OF
BIOSCIENCE ENGINEERING



 FACULTY OF
PHARMACEUTICAL SCIENCES



 FACULTY OF POLITICAL
AND SOCIAL SCIENCES


GHENT
UNIVERSITY

EDUCATION

Bachelors

58

Masters

117

Subsequent Masters

31

Postgraduates

25



EDUCATION

Bachelor programmes

Dutch taught: 58

Masters

Dutch taught: 99

English taught: 49

7 international Course Programmes

5 Erasmus Mundus Master Programmes

Many separate English courses



EDUCATION

Total number of students

41,669

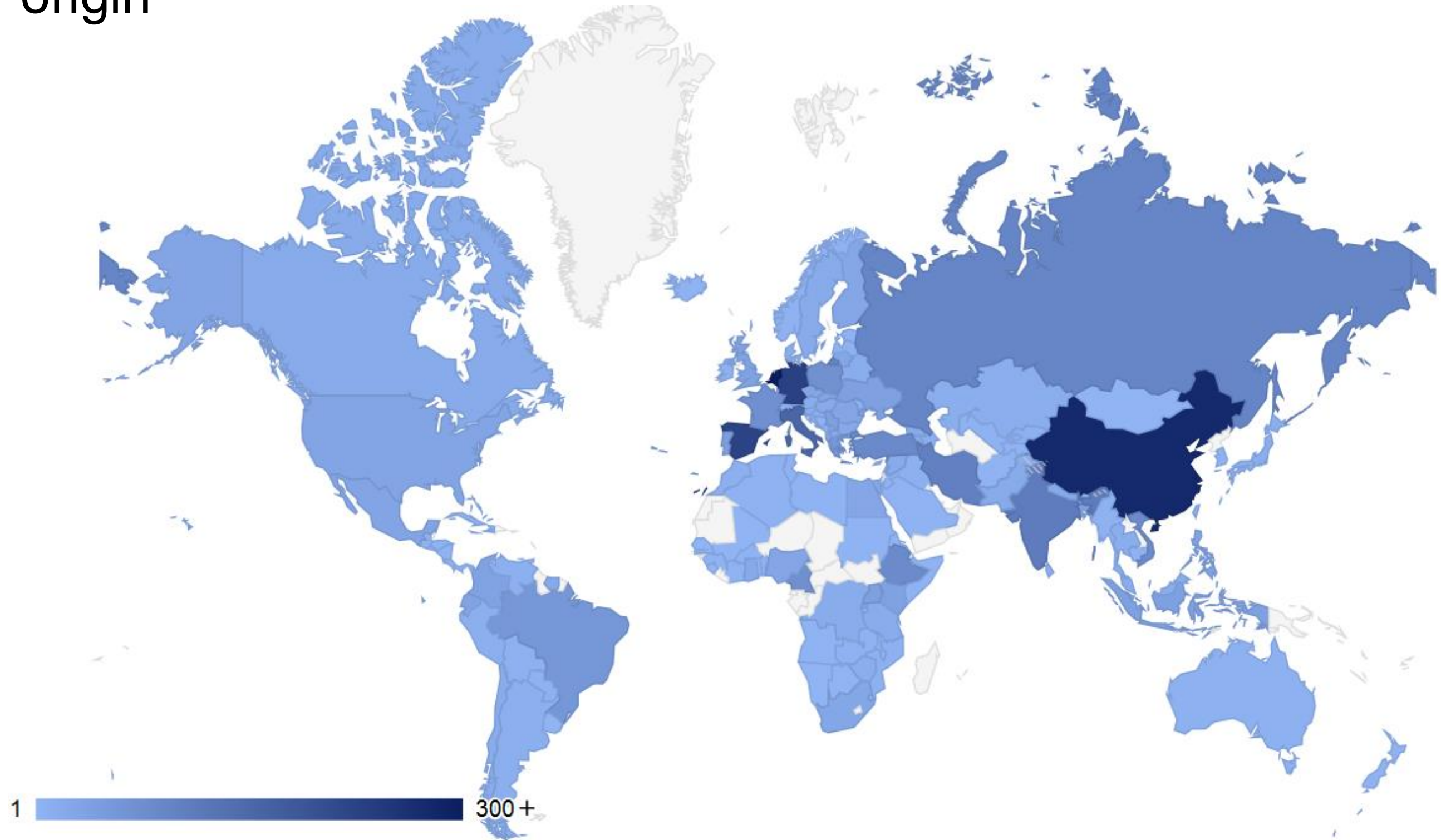
International students

11%



INTERNATIONAL STUDENTS

Countries of origin



STUDENT MOBILITY

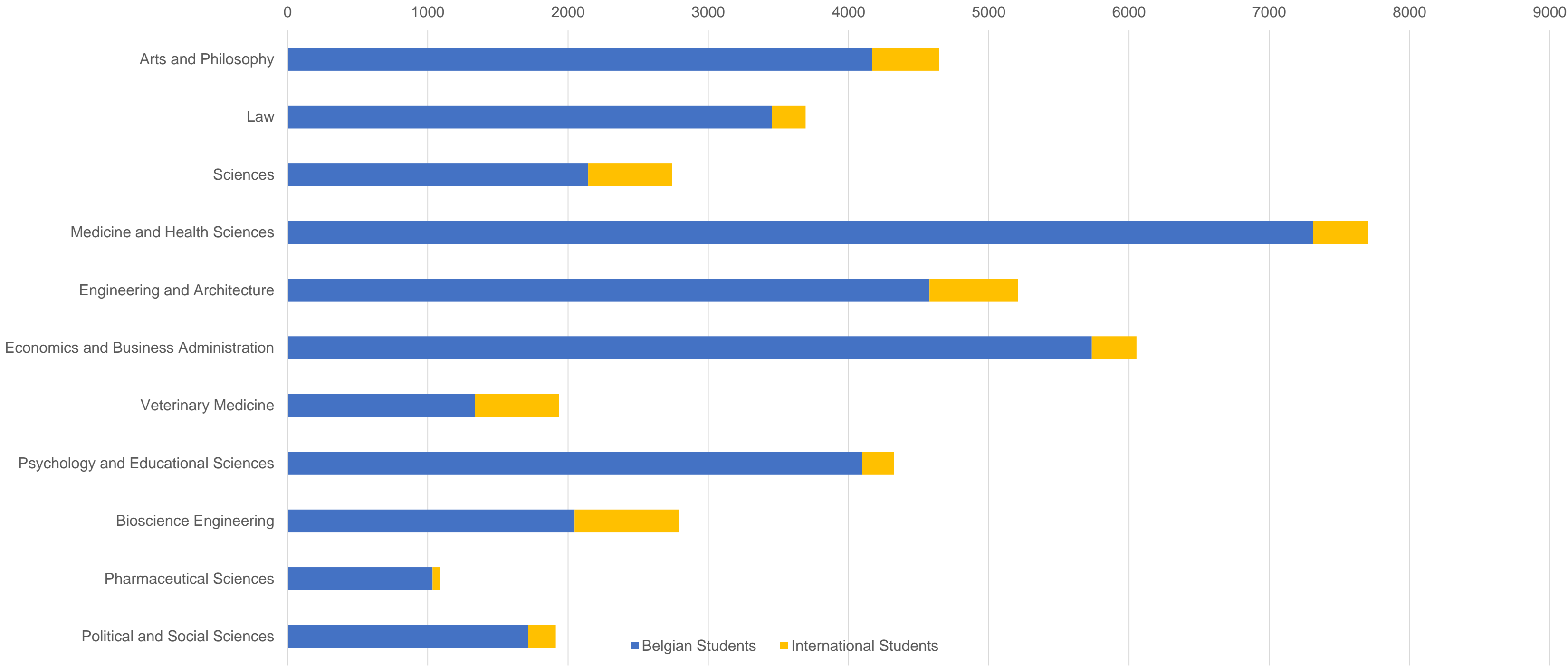
1,300

Ghent University students abroad

5,700

Foreign students at Ghent University
(including exchange students)

NUMBER OF STUDENTS PER FACULTY



(NUMBERS: 2016)

DOCTORAL RESEARCH

PhD students in 5 Doctoral Schools

(Bioscience) Engineering	33%
--------------------------	-----

Life Sciences & Medicine	26%
--------------------------	-----

Arts, Humanities & Law	14%
------------------------	-----

Natural Sciences	14%
------------------	-----

Social & Behavioural Sciences	13%
-------------------------------	-----

**690
PHD DEGREES
AWARDED
IN 2015-2016**

**+4,500
TOTAL NUMBER
OF PHD STUDENTS**

**INTERNATIONAL:
40%**

INTERNATIONAL

Erasmus Success Story

ECTS label

Longstanding experience in
Erasmus Mundus

Several prestigious ERC grants



DEVELOPMENT COOPERATION

Projects with universities in developing countries

Education

Research

Capacity building



PLATFORMS

Africa Platform

China Platform

India Platform

ASEAN +

CESAM Platform

Russia Platform



GHENT UNIVERSITY GLOBAL CAMPUS

Incheon, Zuid-Korea

Since 1 September 2014

Bachelor programmes:

Molecular Biotechnology
Environmental Technology
Food Technology

Flying Faculty



STRUCTURED MOBILITY

IN GHENT ...

- ‘Shuttle mobility’
- International elective course
- Summer School
- Semester abroad (‘China semester’, ‘language immersion semester’)
- Placement abroad (‘Erasmus placement’, bilateral agreements)
- Double degree
- Joint Degree

WHAT'S IN A NAME ...

- Structured mobility
- Networked Mobility
- Integrated mobility
- Mobility Window
- Mobiliteit Fenster
- ...

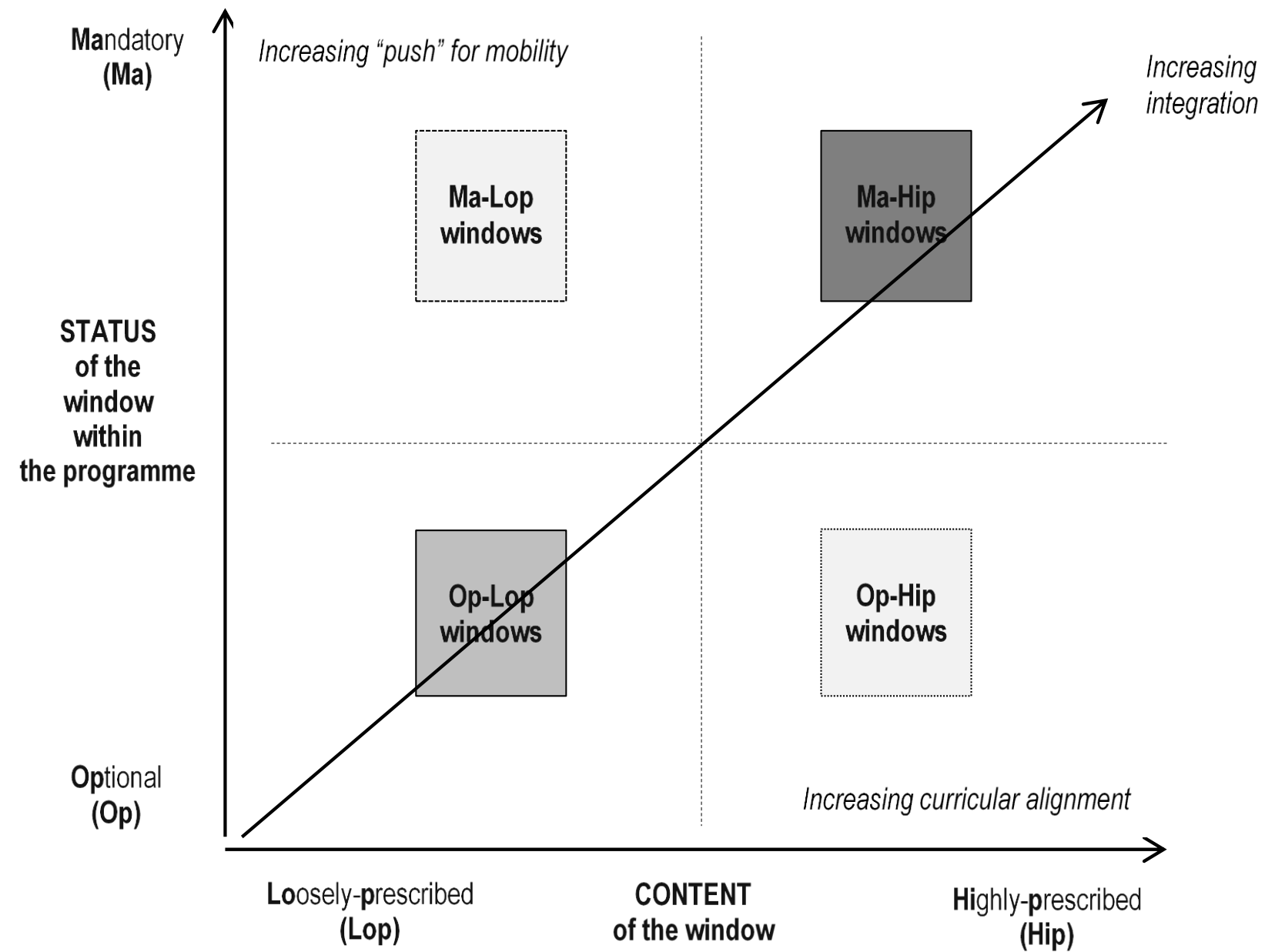
DEFINITION

Cf. Irina Ferencz (ACA, 2014) - MOWIN project
(Erasmus multilateral)

‘A **mobility window** is a period of time reserved for international student mobility that is **embedded** into the curriculum of study programme’

SOME THEORY: TYPOLOGY

*Irina Ferencz – Mowin Study



SOME THEORY: TYPOLOGY

Other important variables

- Duration: short-term vs. long term
- Content/purpose: placement/internship, study, master thesis (research)
- Collective vs. Individual
- Recognition
- ...

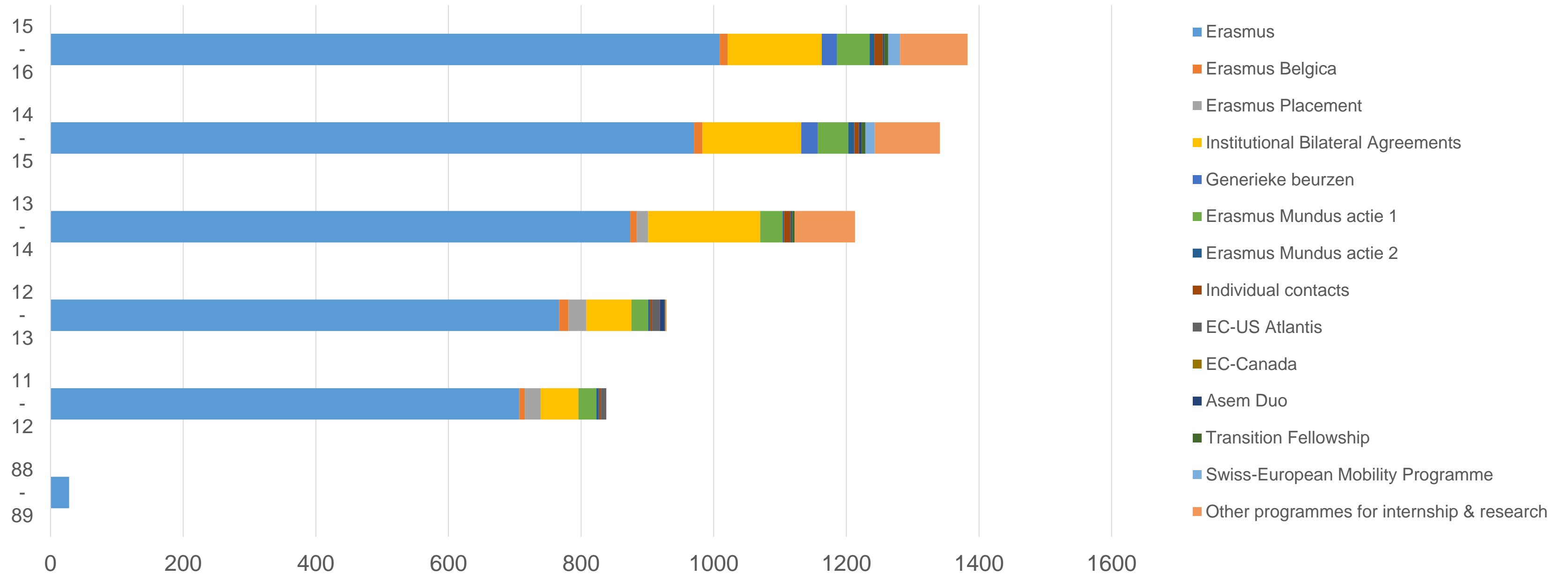
STRUCTURED EXCHANGE: TYPES

- ‘traditional’ exchange (e.g. Erasmus)
- ‘embedded/structured exchange’
 - Long(er) term mobility window
 - Short term ‘Intensive Programme’, ‘Summer School’

WHY STRUCTURED MOBILITY?

- More mobility: by 2020 25% of graduates with valuable experience abroad
 - Better mobility → monitoring quality
 - More validated mobility
- Lowering thresholds for students and promotor

OUTGOING MOBILITY



A CENTRAL APPROACH

Elements

- Part of an overall (faculty/programme) vision on internationalization
- Embedded in regular processes
 - Curriculum design
 - Competence model
 - Quality Assurance
- Tailor made approach → flexibility
- Validated as part of regular curriculum (competences, credits, grades, etc.)
- Presented to students as part of the regular curriculum, see e.g.
<https://studiegids.ugent.be/2017/EN/FACULTY/C/BACH/CBCHMI/CBCHMI.html>

A CENTRAL APPROACH



EXAMPLE 1: SHUTTLE MOBILITY

- 'Commuting' Mobility in a regional context – Lille (Northern France)
- Course based
- Embedded and visible course offer
- Challenge: funding
- See e.g.
<https://studiegids.ugent.be/2016/EN/FACULTY/K/MABA/KMSOCI/KMSOCI.html>

EXAMPLE 2: CHINA SEMESTER

- Ba of Arts in Oriental Languages and Cultures
- Optional track, 1st sem. 3rd Ba, 30 ECTS
- Intensive cooper. w. Liaoning Univ. → language tandem
- Immersion
- Cost
- See <http://www.southandeastasia.ugent.be/node/92>

EXAMPLE 3: FORMER 'IP' EURO CULTURE

IP

- Former LLP programme
- Collective exchange
- Duration: 10 to 90 days (→ summer schools)
- Funding for 3 consecutive years

- E.g. IP 'Euroculture' (incl. Ghent Uppsala, Groningen and Göttingen), 2005-2006, 5 ECTS, short-term, mandatory, embedded in Joint MA

EXAMPLE 4: LANGUAGE IMMERSION SEMESTER

- Ba Applied Language Studies/Ma in Translation, Interpreting or Multilingual Communication
- Core of programme mission: coherence, skills, partner management ...
- Inclusive approach
- See <https://studiegids.ugent.be/2017/EN/FACULTY/A/BACH/AB7TGTED/AB7TGTED.html>

CHALLENGES

- Reciprocity
- Leave no student behind...
- Partner management
- Financial support
- Involvement of staff

CHALLENGE /1

Reciprocity

- We need to do ourselves what we expect our partners to do (cf. the very principle of student exchange)
- English-taught courses ('exchange programmes')
 - Structural and of sufficient size
 - Organisationally clustered (in the same semester)
 - Clustered content-wise

[Home](#) > [Education](#) > [For exchange students](#) > Programmes for Exchange Students

Programmes for Exchange Students

Ghent University offers a wide variety of **courses taught in English** you can choose from as an exchange student. To this purpose each of the faculties has listed the specific offer **for incoming exchange students**.

Mind that each faculty has its own regulations regarding the courses you can take (e.g. regarding the minimum amount of ECTS credits per semester). Check [the respective faculty pages for exchange students](#) and/or consult [the faculty committees for internationalisation](#).

+ Faculty of Arts and Philosophy

+ Faculty of Law and Criminology

+ Faculty of Sciences

+ Faculty of Medicine and Health Sciences

+ Faculty of Engineering and Architecture

+ Faculty of Economics and Business Administration

+ Faculty of Veterinary Medicine

+ Faculty of Psychology and Educational Sciences

+ Faculty of Bioscience Engineering

+ Faculty of Pharmaceutical Sciences

+ Faculty of Political and Social Sciences

Examples

- Generic list: Faculty of Economics and Business Adm.
- Packages: Faculty of Bioscience Engineering

See

<https://www.ugent.be/en/education/exchange/programmeseexchangestudents>

CHALLENGE /2

Leave no student behind!

- From “mobility window” to “window of opportunity” for all
- Develop a strong and attractive alternative for those staying “at home”
- With a focus on intercultural/international competences
- Link “Mobility Windows” & “Exchange Programmes”
 - English-taught international courses for both incoming exchange and regular UGent-students
 - Creating a genuine international classroom
- need for changes in structures and mentalities...

CHALLENGE /3

Partner management

- Sustainable cooperation with partners
 - Good motivation (content-wise) of choices
 - Timely communication (e.g. about changes in the offer)
 - Clear administrative arrangements
 - Fine-tune each other's offer (complementarity rather than similarity)
 - 'Partner pooling'
- => joint programmes

PARTNER MANAGEMENT

Country	City	Institution	max.	BONA	CELB	CHEM	LAND
Austria	Graz	Karl-Franzens-Universität Graz	3			x	
Czech Republic	Brno	Mendelova Univerzita v Brne	3	x			
Germany	Berlin	Humboldt-Universität zu Berlin	2				x
Denmark	Århus	Århus Universitet	4		x		x
Spain	Barcelona	Universitat de Barcelona	4			x	

CHALLENGE /4

Financial support

- for students

 - Increase in the number of outgoing students

 - Expected (hoped for) increase of mobility outside Europe

 - Do the means follow this evolution?

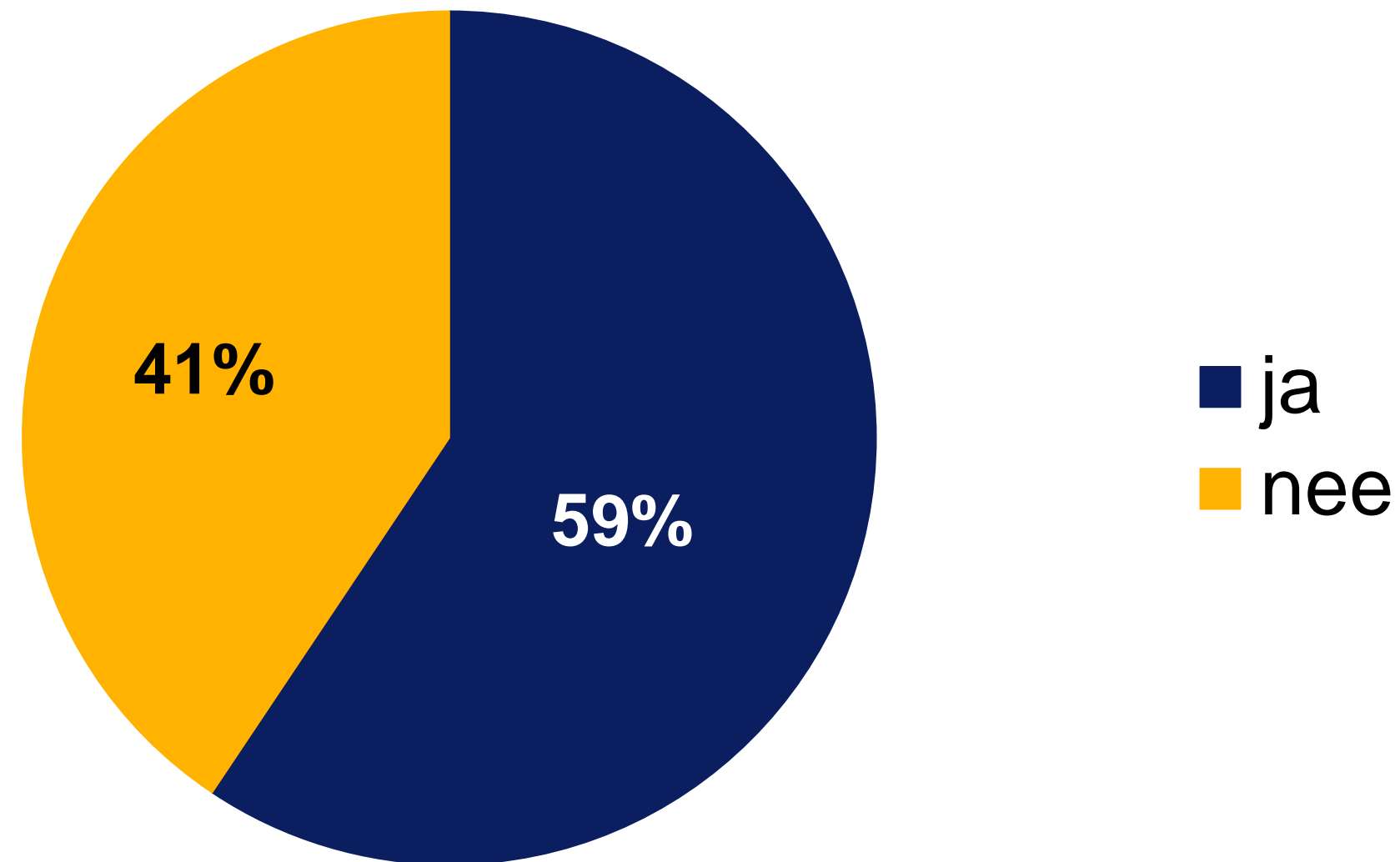
- for programmes

 - Looking for more structural funding (*short-term windows)

 - Inform students about possible funding possibilities

FINANCIAL SUPPORT

*Would you have gone on a exchange without an Erasmus scholarship?



CHALLENGE /5

Involvement of staff

Exchange coordinators

- From great flexibility to a more structural approach

- Screening of partner programmes' content and learning outcomes

Other staff members

- Involvement in internationalisation of the curriculum (of which the mobility window is an element)

- Quality assurance, student administration etc.

→ Information, coaching, training!

Dr. Gijs Coucke

International Relations Officer

DEPARTMENT OF EDUCATION

E Gijs.Coucke@ugent.be

T +32 9 264 70 19

www.ugent.be



Ghent University



@ugent



Ghent University